

UNIQUE BIM INSIGHTS

September 2024



OFFSITE EXPO
17-18 SEP 2024
#CONSTRUCTION #TECHNOLOGY #INNOVATION

Pioneering the Future of Construction at Offsite Expo 2024, London

UBC BIM is thrilled to announce our participation in the highly anticipated Offsite Expo 2024, where innovation meets excellence in construction technology. As a forward-thinking company, we are dedicated to pushing the boundaries of Building Information Modeling (BIM) solutions, and this event provided the perfect platform to showcase our expertise

[Read More](#)

783+
Projects Completed

224+
Clients Served

12+
Countries Served

OCTOBER 2024

S	M	T	W	T	F	S
		1	2	3	4	5
6	7	8	9	10	11	12
13	14	15	16	17	18	19
20	21	22	23	24	25	26
27	28	29	30	31		

Upcoming Events:

Oct 28-29 :
Green Steel Summit, Detroit Michigan USA

Oct 28-30 :
MHBA's National Modular Housing Conference, Pittsburgh Pennsylvania, USA

Oct 30- Nov 1 :
METALCON Atlanta Georgia USA

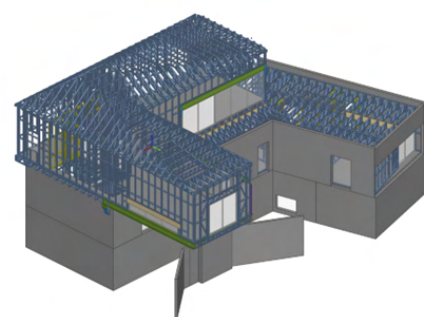
Oct30 - Nov1 :
Steel Frame Experience , San Martin Delos, Andes Argentina

Project of the Month

This project showcases an innovative hybrid Residential construction that includes a basement, first floor, second floor, and roof using Light Gauge Steel Framing (LGSF) walls, floor trusses, roof trusses, a staircase, and concrete walls, complemented by red iron components.

Initially, we received the architectural, MEP (Mechanical, Electrical, Plumbing), and HVAC plans from the client. Our dedicated team then executed comprehensive engineering, modelling, and detailing in accordance with these plans, leading to the submission of well-prepared production files and permit sets.

A standout feature of this project is the striking vaulted ceiling, along with a thoughtfully designed LGSF staircase that enhances both aesthetics and functionality. Following SIMPSON STRONG-TIE Connectors were meticulously integrated into the project to fortify structural cohesion and compliance with engineering standards.



Duration: 14 WORKING DAYS



Industry Insights

How Hurricane Helene Is Impacting US Steel Demand, Supply and Prices

The deadly storm may lead to a temporary near-to-medium-term uptick in steel prices, as scrap flows dwindle and the need for new steel soars, sources said. The Category 4 storm brought extreme flooding and winds to a swath 275 miles from the storm's eye, according to a September 25 warning from the National Atmospheric and Oceanic Administration. [Read more...](#)



US Residential Construction Spending Declines 0.3% in August

Residential construction spending in the U.S. declined 0.3% in August, with single-family construction down 1.5% for the fifth straight month. Multifamily projects also slowed, falling 0.4%. However, private residential improvement spending rose 1.0% compared to the previous year. [Read more...](#)

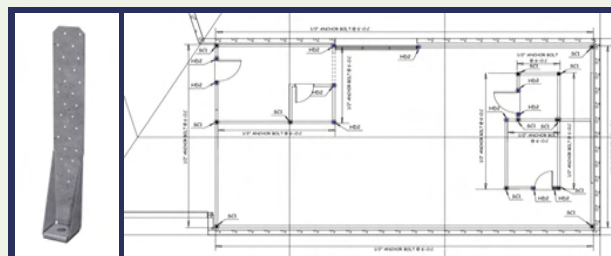
Technical Marvel

HOLDOWN- SIMPSON HTT5

Holdowns and tension ties represent key components that comprise a continuous load path. In light-frame construction, holdowns are typically used to resist uplift due to shear wall overturning or wind uplift forces. In panelized roof construction, holdowns are used to anchor the concrete or masonry walls to the roof framing.

For this particular project as per LRFD design criteria to uplift force is 6500lbs so to counter balance that we have adopted the HTT5 at several locations

[Know more](#)

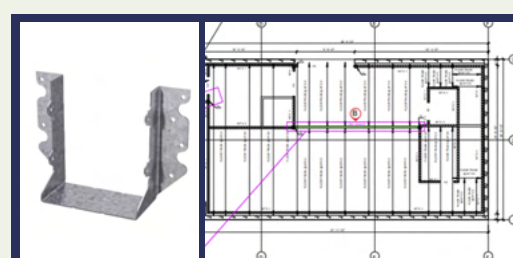


U HANGER- SIMPSON U46R

The U is designed for joist-to-header installation in framed construction. This face-mount hanger is engineered for strength and provides easy installation. The U hanger is precision-formed and manufactured to the highest quality standards.

In this project the U hangers are used to connect the floor trusses against the walls/beams and girders

[Know more](#)

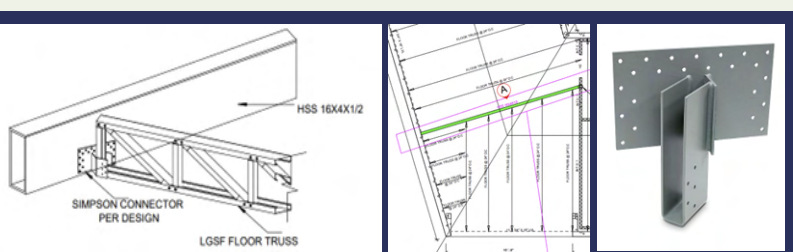


SKEW HANGER- SIMPSON HHSUQ414

The HHSUQ is a high-load, face-mount, truss-to-truss hanger designed to accommodate severe skew angles (45°-84°) for huss trusses, enabling a greater range of installation applications. Fastening the HHSUQ with Strong-Drive® SDS Heavy-Duty Connector screws makes installation fast and easy, while eliminating the inconvenience of bolted applications.

As per the plan geometry the building is not perfectly 90° so as the trusses. With the help of Skew hangers, we could able to achieve a rigid fixity of trusses against walls & beams

[Know more](#)



Accurate Steel Fabricators are authorized suppliers of Simpson Strong Tie Connectors and you can give the following link <https://accuratesteelfab.com>